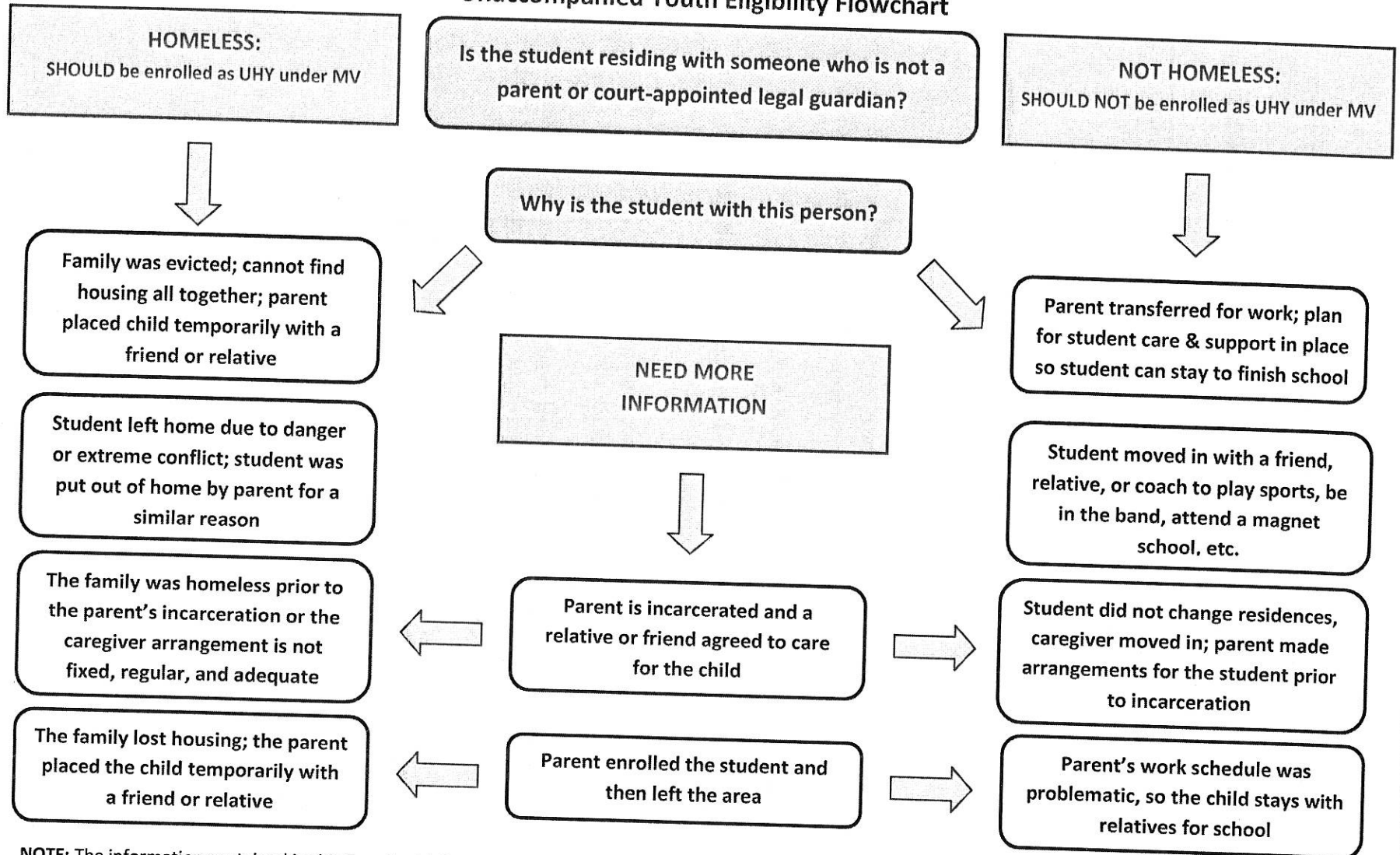




## Unaccompanied Youth Eligibility Flowchart



**NOTE:** The information contained in this flowchart is intended to serve as a general guide. All McKinney-Vento eligibility determinations should be made on a case-by-case basis weighing the individual circumstances of each student. To be eligible for McKinney-Vento services as an unaccompanied homeless student, the student must meet the criteria of both homeless and unaccompanied.